

Join our popular
Graphghan Clubs
today!

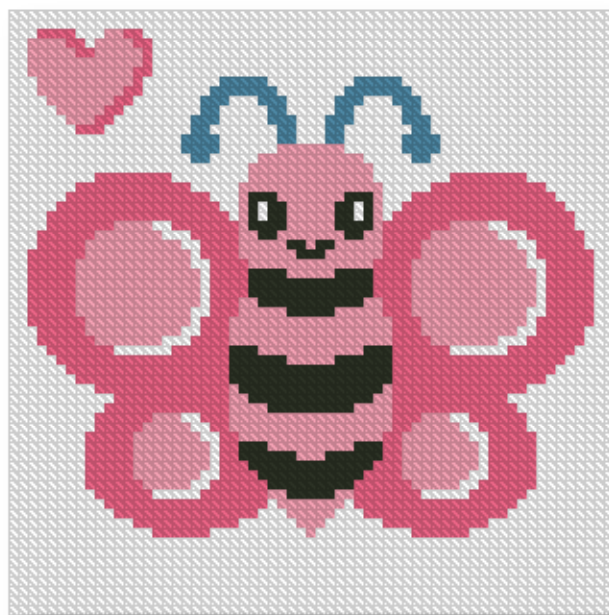
graphghans.com

Crafts Made From Graphs

Designer: Lissa Mitchell



Kawaii Butterfly Pillow Pattern



63 stitches x 63 rows

2016

Copyright

Lissa Mitchell

Materials:

Crochet Hook size J 10/6.0MM

Measuring Tape

Scissors

Yarn needle to weave in ends

Color Key for Yarn Brands and # codes.

Yarn Brand Codes and Yarn Brand Names:

ILTY: I love this yarn

Gauge:

The gauge for this pattern is **3.5 stitches per inch** wide (14 sts per 4 inches) with a 6.0 hook size J

To figure SIZE and YARDS needed, simply make a swatch with the yarn and hook size that you would like to use. BEFORE making your swatch, mark your yarn, every 3 feet (1 yard) with a magic marker until you reach 6 yards. Make a chain of 40 stitches with a different piece of yarn. Then, begin your desired stitches in the chain until you reach 4 inches. (Or one inch, up to you!) Count your stitches for 1 inch. If you have 4 stitches, then divide the total stitch width of the project by 4. Your answer is the total approx inches. For the yards, count how many stitches you made per yard. Look at the chart above for a particular color. If for example, there are 200 stitches of red and you counted 15 stitches in a yard of your swatch, then divide 200 by 15. Your answer is how many yards you will need of that color. ADD plenty more yards to that, so you can have well enough.

Abbreviations:

RS – right side (front), begin reading graph row from right to left

WS – wrong side (back), begin next graph row reading left to right

Ch – chain

SC – single crochet

HDC – half double crochet

TSS – Tunisian Simple Stitch (also known as the Afghan stitch)






Row 11 – eleventh row of the project

YO – yarn over

Skill Level: Easy to Intermediate (This pattern is rated for the yarn color changes involved. Once you know how to change color, the method is the same throughout.)

Understanding the color key:

Color name, # code, brand code, color shade, yards

Lt blue 381 (RHSS)		30
Black		7
Pumpkin 254 (RHSS)		450
Bright Yellow 00608 (BSV)		410
Peacock 1505 (RHWL)		3

Understanding the written instructions:

The number after the color is how many stitches you work of that color. Example:

RS Row 11: spring 60 yellow 2, spring 3

right side (front) row color how many stitches of that color

begin row 11 with 60 stitches of the color spring, then 2 yellow, then 3 spring.
always chain 1 after each row for sc, ch2 for hdc.

Written instructions for Single Crochet (SC):

Begin with a chain (ch) of 100+1 (for example). Work SC in 2nd CH from hook and in each CH across in the color indicated for first row (100 ST). Always ch 1 and turn at the end of each row.

Written instructions for Half Double Crochet (HDC):

Begin with a chain (ch) of 100+2 (for example). Work HDC in 3rd CH from hook and in each CH across in the color indicated for first row (100 ST). Always ch 2 and turn at the end of each row.

For instructions on how to change yarn colors, please search youtube video, search "color change graphghan"

Written instructions for Tunisian Simple Stitch (TSS) also known as the Afghan Stitch:

Before you begin, the written instructions are to be read (stitched) **BACKWARDS** order, on the **WS** Rows.

TSS consists of a forward pass and return pass, counting a 1 row. Begin with a chain (ch) of 100 (for example) There are no additional chains.

Foundation row: Insert hook into 2nd ch from hook, yo, draw up a loop. Insert hook into next ch, yo, draw up a loop. Repeat all the way across (100 loops on hook).

Yo, draw through 1 loop. Yo, draw through 2 loops until the end, leaving 1 loop remaining on your hook. (100 stitches)

Forward Pass: Insert hook into 1st vertical bar from foundation row. Yo, draw up a loop. Insert hook into next vertical bar, yo, draw up a loop. Repeat all the way across (100 loops on hook).

Return Pass: Yo, draw through 1 loop. Yo, draw through 2 loops until the end, leaving 1 loop remaining on your hook. (100 stitches)

Finish off your final row in the project by working a slip stitch under each vertical bar across the last row.

For instructions on how to change yarn colors, please search youtube video, search "color change tss"

COLOR CHANGES

SC (single crochet)



When you are on the last stitch of dark pink, when there are 2 loops on the hook...

Draw up new color to complete the dark pink stitch...

Work your next sc stitch in light pink... tails can go on the back or the front of your work. It is your preference.

And continue across or until there is a new color change.

HDC (Half double crochet)



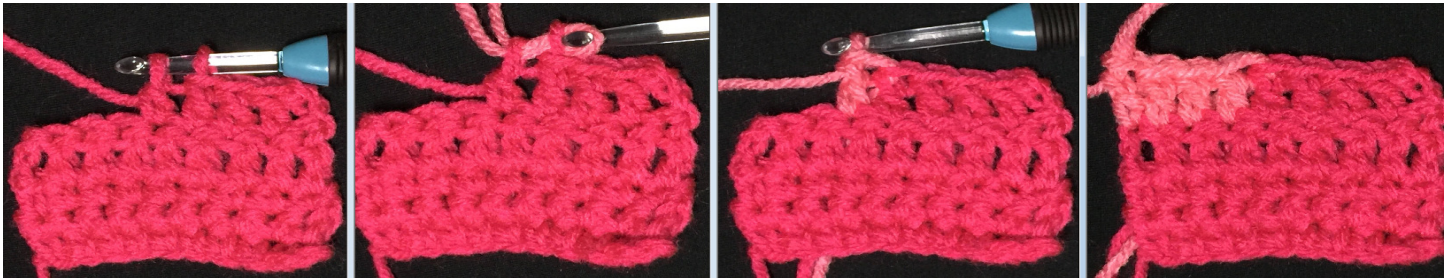
When you are on the last stitch of dark pink, when there are 3 loops on the hook...

Draw up new color to complete the dark pink stitch...

Work your next hdc stitch in light pink... tails can go on the back or the front of your work. It is your preference.

And continue across or until there is a new color change.

DC (Double crochet)

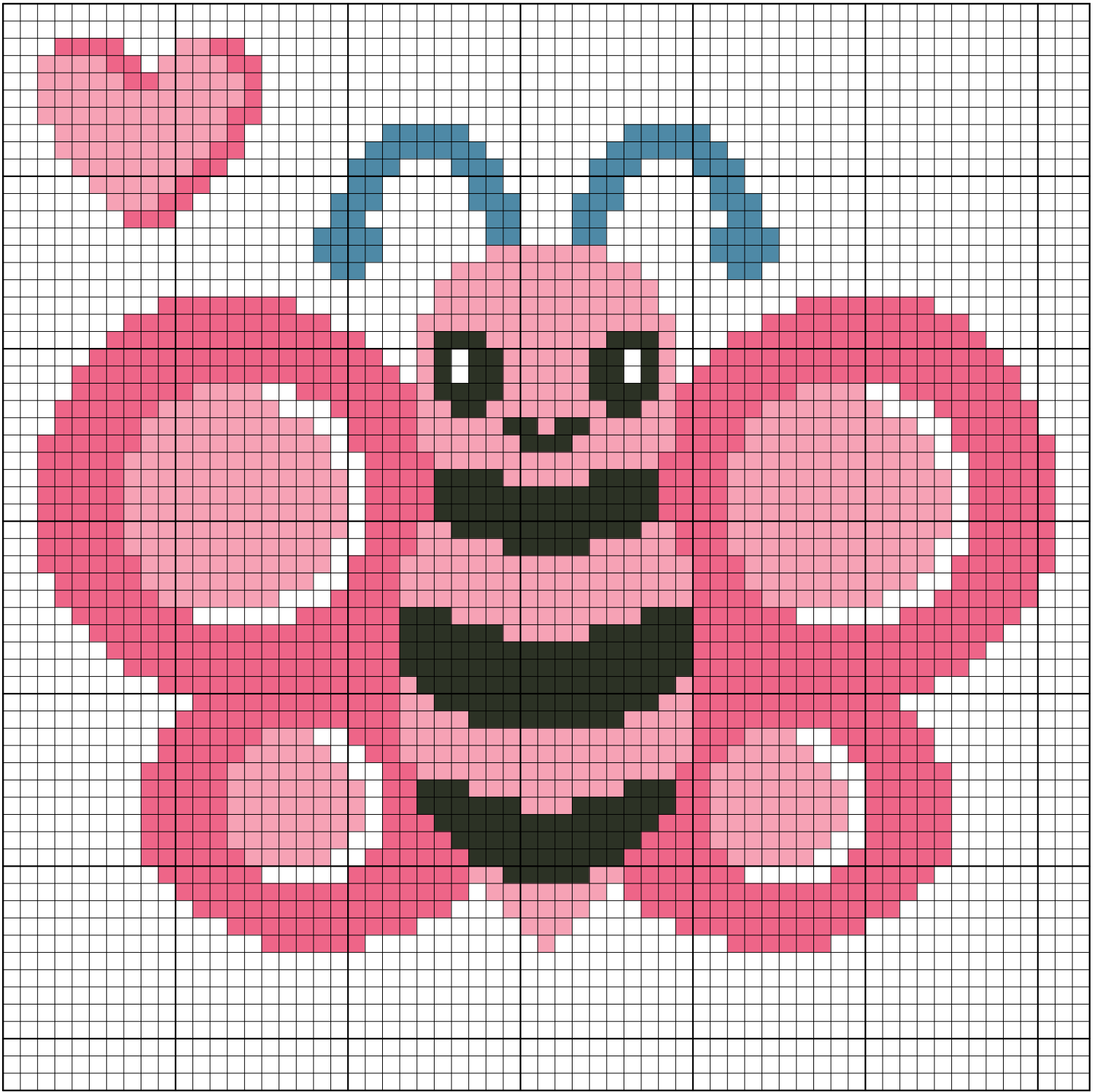


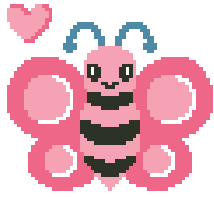
<p>When you are on the last stitch of dark pink, when there are 2 loops on the hook...</p>	<p>Draw up new color to complete the dark pink stitch...</p>	<p>Work your next dc stitch in light pink... tails can go on the back or the front of your work. It is your preference.</p>	<p>And continue across or until there is a new color change.</p>
--	--	---	--

TSS (Tunisian simple stitch) aka "afghan stitch"



<p>On forward pass, when you are on the last stitch of aqua insert hook in next vertical bar...</p>	<p>Draw up new purple color... (and finish out row)</p>	<p>On return pass, when you have 2 loops of different colors from hook, grab and pull through purple...</p>	<p>Do the same when switching back to aqua...</p>	<p>Finish out row.</p>
---	---	---	---	------------------------





White		230
Pink (#100 ILTY)		96
Hot Rose (#350 ILTY)		107
Peacock (#310 ILTY)		10
Black		40

RS Row 1: white 63

WS Row 2: white 63

RS Row 3: white 63

WS Row 4: white 63

RS Row 5: white 63

WS Row 6: white 63

RS Row 7: white 63

WS Row 8: white 63

RS Row 9: white 15 - hot rose 6 - white 10 - pink 1 - white 10 - hot rose 6 - white 15

WS Row 10: white 13 - hot rose 11 - white 6 - pink 3 - white 6 - hot rose 11 - white 13

RS Row 11: white 11 - hot rose 15 - white 3 - pink 5 - white 3 - hot rose 15 - white 11

WS Row 12: white 10 - hot rose 17 - white 1 - pink 7 - white 1 - hot rose 17 - white 10

RS Row 13: white 9 - hot rose 6 - white 5 - hot rose 7 - pink 2 - black 5 - pink 2 - hot rose 7 - white 5 - hot rose 6 - white 9

WS Row 14: white 8 - hot rose 6 - pink 5 - white 2 - hot rose 6 - black 9 - hot rose 6 - pink 5 - white 2 - hot rose 6 - white 8

RS Row 15: white 8 - hot rose 5 - white 2 - pink 7 - hot rose 4 - black 11 - hot rose 4 - white 2 - pink 7 - hot rose 5 - white 8

WS Row 16: white 8 - hot rose 5 - pink 8 - white 1 - hot rose 3 - black 13 - hot rose 3 - pink 8 - white 1 - hot rose 5 - white 8

RS Row 17: white 8 - hot rose 5 - white 1 - pink 8 - hot rose 2 - black 6 - pink 3 - black 6 - hot rose 2 - white 1 - pink 8 - hot rose 5 - white 8

WS Row 18: white 8 - hot rose 5 - pink 8 - white 1 - hot rose 2 - black 3 - pink 9 - black 3 - hot rose 2 - pink 8 - white 1 - hot rose 5 - white 8

RS Row 19: white 8 - hot rose 5 - white 2 - pink 7 - hot rose 2 - pink 15 - hot rose 2 - white 2 - pink 7 - hot rose 5 - white 8

WS Row 20: white 9 - hot rose 5 - pink 5 - white 2 - hot rose 2 - pink 17 - hot rose 2 - pink 5 - white 2 - hot rose 5 - white 9

RS Row 21: white 9 - hot rose 6 - white 2 - pink 3 - hot rose 3 - pink 17 - hot rose 3 - white 2 - pink 3 - hot rose 6 - white 9

WS Row 22: white 10 - hot rose 13 - pink 4 - black 9 - pink 4 - hot rose 13 - white 10

RS Row 23: white 11 - hot rose 12 - pink 2 - black 13 - pink 2 - hot rose 12 - white 11

WS Row 24: white 9 - hot rose 14 - pink 1 - black 15 - pink 1 - hot rose 14 - white 9

RS Row 25: white 7 - hot rose 16 - black 17 - hot rose 16 - white 7

WS Row 26: white 6 - hot rose 17 - black 17 - hot rose 17 - white 6

RS Row 27: white 5 - hot rose 18 - black 6 - pink 5 - black 6 - hot rose 18 - white 5

WS Row 28: white 4 - hot rose 7 - white 6 - hot rose 6 - black 3 - pink 11 - black 3 - hot rose 6 - white 6 - hot rose 7 - white 4

RS Row 29: white 3 - hot rose 6 - white 3 - pink 7 - hot rose 4 - pink 17 - hot rose 4 - white 3 - pink 7 - hot rose 6 - white 3

WS Row 30: white 3 - hot rose 5 - pink 10 - white 2 - hot rose 3 - pink 17 - hot rose 3 - pink 10 - white 2 - hot rose 5 - white 3

RS Row 31: white 2 - hot rose 6 - white 1 - pink 11 - hot rose 3 - pink 17 - hot rose 3 - white 1 - pink 11 - hot rose 6 - white 2

WS Row 32: white 2 - hot rose 5 - pink 12 - white 2 - hot rose 3 - pink 5 - black 5 - pink 5 - hot rose 3 - pink 12 - white 2 - hot rose 5 - white 2

RS Row 33: white 2 - hot rose 5 - white 1 - pink 13 - hot rose 3 - pink 2 - black 11 - pink 2 - hot rose 3 - white 1 - pink 13 - hot rose 5 - white 2

WS Row 34: white 2 - hot rose 5 - pink 13 - white 1 - hot rose 4 - black 13 - hot rose 4 - pink 13 - white 1 - hot rose 5 - white 2

RS Row 35: white 2 - hot rose 5 - white 1 - pink 13 - hot rose 4 - black 13 - hot rose 4 - white 1 - pink 13 - hot rose 5 - white 2

WS Row 36: white 2 - hot rose 5 - pink 13 - white 1 - hot rose 4 - black 4 - pink 5 - black 4 - hot rose 4 - pink 13 - white 1 - hot rose 5 - white 2

RS Row 37: white 2 - hot rose 5 - white 2 - pink 12 - hot rose 4 - pink 13 - hot rose 4 - white 2 - pink 12 - hot rose 5 - white 2

WS Row 38: white 2 - hot rose 6 - pink 11 - white 1 - hot rose 4 - pink 6 - black 3 - pink 6 - hot rose 4 - pink 11 - white 1 - hot rose 6 - white 2

RS Row 39: white 3 - hot rose 5 - white 2 - pink 10 - hot rose 4 - pink 5 - black 2 - pink 1 - black 2 - pink 5 - hot rose 4 - white 2 - pink 10 - hot rose 5 - white 3

WS Row 40: white 3 - hot rose 6 - pink 7 - white 3 - hot rose 5 - pink 2 - black 2 - pink 7 - black 2 - pink 2 - hot rose 5 - pink 7 - white 3 - hot rose 6 - white 3

RS Row 41: white 4 - hot rose 7 - white 2 - pink 4 - hot rose 7 - pink 1 - black 4 - pink 5 - black 4 - pink 1 - hot rose 7 - white 2 - pink 4 - hot rose 7 - white 4

WS Row 42: white 4 - hot rose 19 - white 1 - pink 1 - black 1 - white 1 - black 2 - pink 5 - black 2 - white 1 - black 1 - pink 1 - white 1 - hot rose 19 - white 4

RS Row 43: white 5 - hot rose 17 - white 2 - pink 1 - black 1 - white 1 - black 2 - pink 5 - black 2 - white 1 - black 1 - pink 1 - white 2 - hot rose 17 - white 5

WS Row 44: white 6 - hot rose 15 - white 3 - pink 1 - black 3 - pink 7 - black 3 - pink 1 - white 3 - hot rose 15 - white 6

RS Row 45: white 7 - hot rose 12 - white 5 - pink 15 - white 5 - hot rose 12 - white 7

WS Row 46: white 9 - hot rose 8 - white 8 - pink 13 - white 8 - hot rose 8 - white 9

RS Row 47: white 25 - pink 13 - white 25

WS Row 48: white 19 - peacock 2 - white 5 - pink 11 - white 5 - peacock 2 - white 19

RS Row 49: white 18 - peacock 4 - white 6 - pink 7 - white 6 - peacock 4 - white 18

WS Row 50: white 18 - peacock 4 - white 6 - peacock 2 - white 3 - peacock 2 - white 6 - peacock 4 - white 18

RS Row 51: white 19 - peacock 2 - white 7 - peacock 2 - white 3 - peacock 2 - white 7 - peacock 2 - white 9 - hot rose 3 - white 7

WS Row 52: white 6 - pink 3 - hot rose 2 - white 8 - peacock 3 - white 5 - peacock 3 - white 3 - peacock 3 - white 5 - peacock 3 - white 19

RS Row 53: white 20 - peacock 2 - white 5 - peacock 2 - white 5 - peacock 2 - white 5 - peacock 2 - white 8 - hot rose 2 - pink 5 - white 5

WS Row 54: white 4 - pink 7 - hot rose 2 - white 7 - peacock 3 - white 3 - peacock 3 - white 5 - peacock 3 - white 3 - peacock 3 - white 20

RS Row 55: white 21 - peacock 7 - white 7 - peacock 7 - white 7 - hot rose 2 - pink 9 - white 3

WS Row 56: white 3 - pink 10 - hot rose 1 - white 8 - peacock 5 - white 9 - peacock 5 - white 22

RS Row 57: white 48 - hot rose 2 - pink 11 - white 2

WS Row 58: white 2 - pink 12 - hot rose 1 - white 48

RS Row 59: white 48 - hot rose 1 - pink 5 - hot rose 2 - pink 5 - white 2

WS Row 60: white 2 - pink 4 - hot rose 2 - white 1 - pink 4 - hot rose 2 - white 48

RS Row 61: white 49 - hot rose 2 - pink 2 - white 3 - hot rose 4 - white 3

WS Row 62: white 63

RS Row 63: white 63