

# Love Freebies!?

SIGN UP FOR THE  
*Melody's Makings* NEWSLETTER!

YOU'LL GET 2 FREE PATTERNS  
RIGHT AWAY  
&  
NOTIFICATION OF  
REGULAR FREEBIES, FLASH SALES,  
&  
NEW RELEASES

<http://www.melodys-makings.com/free-content/>

## Monkey Lunchbox Crochet Pattern



### Materials:

- Yarn: Approximately 220-235 Yards of Worsted (4) Weight Yarn (Approx. 200-210 Base Color 1, Approx. 20-25 Accent Color 2). Approx. 5-10 Yards of Matching Fun Fur (OPTIONAL) (I used Red Heart Super Saver)
- Crochet Hook: Size 5.5 mm (I/9) OR whatever size is needed to obtain gauge
- 2 5/8" Buttons for Eyes
- Yarn or Tapestry Needle

### Abbreviations:

- DC: Double Crochet
- SC: Single Crochet
- SC2tog: Single Crochet the next two sts together (decrease)
- CH: Chain
- \*\*: Repeat the section in between the two stars as specified

### Gauge:

7 sts and 9 rows = 2 inches (5 centimeters)  
in Single Crochet  
\*\*\*It is important to check your gauge!\*\*\*

## Pattern

### Bottom of Lunch Box

Create a Magic Circle with 6 SC sts in the center using Base Color 1 Yarn.

Join in the round by slip stitching first and last sts together.

**Round 1:** CH2, 3 DC sts into each stitch around, slip stitch into first stitch (18 total sts not including starting chain)

**Round 2:** CH2, \*DC into each of next two sts, 4 DC in next stitch, DC into each of next five sts, 4 DC in next stitch\* Repeat once, slip stitch into first stitch (30 total sts)

**Round 3:** CH2, DC into each of next three sts, 4 DC in next stitch, DC into each of next eight sts, 4 DC in next stitch, DC into each of next five sts, 4 DC in next stitch, DC into each of next eight sts, 4 DC in next stitch, DC into each of last two sts, slip stitch into first stitch (42 total sts)

**Round 4:** CH2, DC into each of next four sts, 4 DC in next stitch, DC into each of next eleven sts, 4 DC in next stitch, DC into each of next eight sts, 4 DC in next stitch, DC into each of next eleven sts, 4 DC in next stitch, DC into each of last four sts, slip stitch into first stitch (54 total sts)

**Round 5:** CH2, DC into each of next six sts, 4 DC in next stitch, DC into each of next fourteen sts, 4 DC in next stitch, DC into each of next eleven sts, 4 DC in next stitch, DC into each of next fourteen sts, 4 DC in next stitch, DC into each of last five sts, slip stitch into first stitch (66 total sts)

**Fasten off. Weave in all ends.**

Find the shorter side of the bottom piece. Pick up new strand of Base Color 1 Yarn and attach to corner with right side facing you. The first stitch worked in the next row should be the corner stitch.

**Row 1:** CH1, Working through the back loop only, Single crochet each stitch across row, Turn Work (15 total sts)

**Rows 2-6:** CH1, Single crochet each stitch across, Turn Work (15 total sts)

**Row 7:** CH2, SC2tog, SC each of the next 11 sts, SC2tog, Turn Work (13 total sts)

**Rows 8-13:** CH1, Single crochet each stitch across, Turn Work

**Row 14:** CH2, SC2tog, SC each of the next 9 sts, SC2tog, Turn Work (11 total sts)

**Rows 15-20:** CH1, Single crochet each stitch across, Turn Work

**Row 21:** CH2, SC2tog, SC each of the next 7 sts, SC2tog, Turn Work (9 total sts)

**Rows 22-27:** CH1, Single crochet each stitch across, Turn Work

**Row 28:** CH2, SC2tog, SC each of the next 5 sts, SC2tog (7 total sts)

**Fasten off. Weave in all ends.**

Repeat the above instructions for the second shorter side of your bottom piece.

Find the longer side of the bottom piece you just created. Pick up new strand of Base Color 1 Yarn and attach to corner with right side facing you. The first stitch worked in next row should be corner stitch.

**Row 1:** CH1, Working through the back loop only, Single Crochet each stitch across row, Turn Work (18 total sts not including starting chain)

**Rows 2-28:** CH1, Single Crochet each stitch across, Turn Work (18 total sts)

**Fasten off. Weave in all ends.**

Repeat the above instructions for the second longer side of your bottom piece. Do not fasten off.

**Row 29-37:** CH1, Single Crochet each stitch across, Turn Work

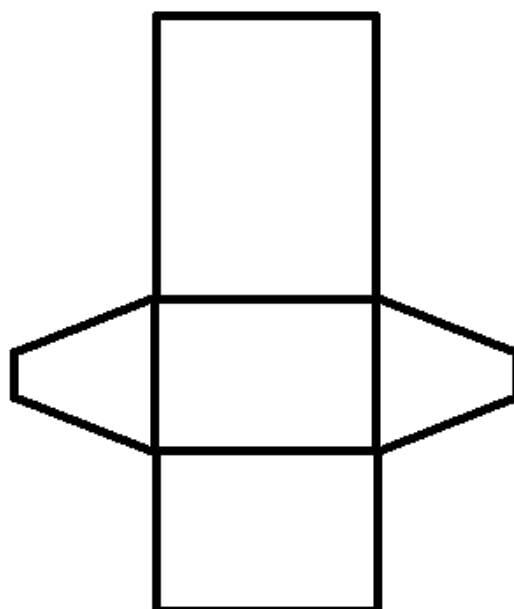
**Row 38:** CH1, Single Crochet in each of next six sts, CH2, skip the next two sts, Single Crochet in each of next two sts, CH2, skip the next two sts, Single Crochet in each of last six sts, Turn Work

**Row 39:** CH1, Single Crochet in each of next six sts, 2 SC in chain space, Single Crochet in each of next two sts, 2 SC in chain space, Single crochet in each of last six sts, Turn Work

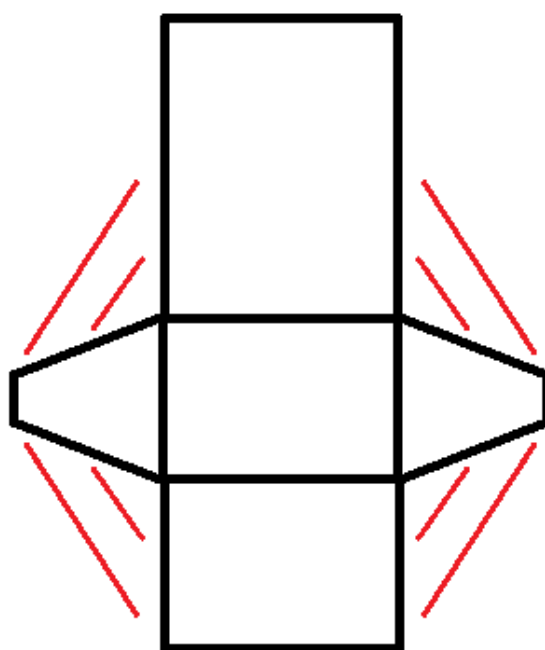
**Rows 40-52:** CH1, Single Crochet in each stitch across, Turn Work (18 total sts)

**Fasten Off. Weave in all ends.**

You should now have a piece which looks similar to the diagram below.



Seam your piece into the lunchbox shape. This is done by folding with the right sides together, and either using your yarn needle to seam up the edge, or doing a Single Crochet stitch all the way up the edge. The diagram below shows which sides should be seamed to which. The longest side will fold over the top to create the lid for your lunchbox. Turn your project right side out after seaming.



## Face Pattern

Chain 11 using Accent Color 2 Yarn

**Row 1:** Single Crochet into the second chain from hook and each chain across, Turn Work (10 total sts)

**Row 2:** CH1, 2 SC in first stitch, Single Crochet in each of next eight sts, 2 SC in last stitch, Turn Work (12 total sts)

**Row 3:** CH1, 2 SC in first stitch, Single Crochet in each of next ten sts, 2 SC in last stitch, Turn Work (14 total sts)

**Row 4:** CH1, 2 SC in first stitch, Single Crochet in each of next twelve sts, 2 SC in last stitch, Turn Work (16 total sts)

**Rows 5&6:** CH1, Single Crochet in each stitch across, Turn Work

**Row 7:** CH1, SC2tog, SC2tog, Single Crochet in each of next eight sts, SC2tog, SC2tog, Turn Work (12 total sts)

**Row 8:** CH1, SC2tog, SC2tog, Single Crochet in each of next four sts, SC2tog, SC2tog, Turn Work (8 total sts)

**Row 9:** CH1, 2 SC in first stitch, Single Crochet in each of next six sts, 2 SC in last stitch, Turn Work (10 total sts)

**Row 10:** CH1, Single crochet in each stitch across, Turn Work

**Row 11:** CH1, 2 SC in first stitch, Single Crochet in each of next eight sts, 2 SC in last stitch, Turn Work (12 total sts)

**Row 12:** CH1, SC in each of next three sts, CH2, Skip the next two sts, Single Crochet in each of next two sts, CH2, Skip the next two sts, SC in each of last three sts, Turn Work (8 total sts, 2 chain spaces)

**Row 13:** CH1, SC in each of next three sts, 2 SC in chain space, SC in each of next two sts, 2 SC in chain space, SC in each of last three sts, Turn Work (12 total sts)

**Row 14:** SC2tog, SC in each of next eight sts, SC2tog, Turn Work (10 total sts)

**Row 15:** SC2tog, SC in each of next six sts, SC2tog, Turn Work (8 total sts)

**Row 16:** SC2tog, SC in each of next four sts, SC2tog, Turn Work (6 total sts)

**Row 17:** SC2tog, SC in each of next two sts, SC2tog, Turn Work (4 total sts)

### **Fasten Off. Secure and weave in all ends.**

Use your yarn needle to sew the face onto the front, outside of your lunchbox. The chain spaces in the lid should line up with the chain spaces in the face in order for the button eyes to come through.

Sew the button eyes to the base of your lunchbox so that when they're connected through the lid, they will hold the box shut.

## Ear Pattern

Chain 4 using Accent Color 2 Yarn

**Row 1:** SC into the second chain from hook, 3 DC sts into the next chain, SC into the last chain, Turn Work (5 total sts)

Drop Color 2 Yarn and Pick Up Base Color 1 Yarn

(OPTIONAL – Hold a strand of Fun Fur along with Base Color 1 Yarn)

**Row 2:** CH2, DC into first stitch, 2 DC into next stitch, 3 DC into next stitch, 2 DC into next stitch, DC into last stitch (9 total sts)

### **Fasten Off. Secure and weave in all ends.**

Use your yarn needle to sew the ears onto the sides of your lunch box.

## Handle Pattern

Chain 4 using Base Color 1 Yarn

Join in the round by slip stitching first and last sts together

**Round 1:** CH2, DC in each chain around, slip stitch into first stitch (4 total sts)

**Round 2:** CH2, DC in each stitch around, slip stitch into first stitch

**Repeat Round 2** until your handle measures approx. 4 inches (10cm) in length.

**Fasten off.**

Use your yarn needle to sew to the center top of lunchbox. Weave in all ends.

This design, a written work and images are a copyright of

©MelodysMakings and may not be copied or reproduced in any way.

You have permission to sell finished products made from this pattern, but please leave a link to my website, [www.melodys-makings.com](http://www.melodys-makings.com), in your product listing specifying that I am the designer of this pattern. Thank you for supporting me as a work at home mother!